

# SEED S



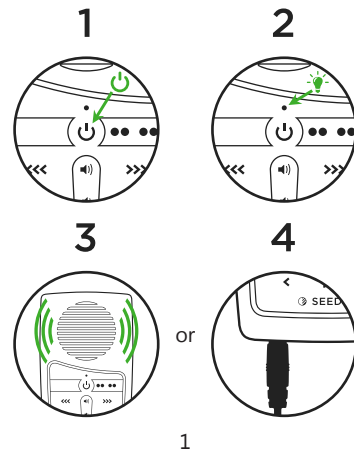
## SOLAR AUDIO PLAYER USER MANUAL

Models: S1 and S2 (pictured)



## EASY START

Press the button for 2 seconds to turn the player on and begin playback mode (it will beep once). Click the button to turn the player off (it will beep twice).



1

## SELECTING A CHANNEL

GREEN\* BROWN\*\*

While playing audio from one Channel, clicking on the second Channel button will navigate to the beginning of the second Channel.

*#If your player came with the Cross Navigation feature, clicking the second Channel button will navigate to the beginning of the corresponding Chapter.*

*\*Applies to the Seed S1 and Seed S2 only.*

*\*\*Applies to the Seed S1 only.*

2

## NAVIGATING DURING PLAYBACK

Each Channel is subdivided into one or more Sections, containing one or more Books, containing one or more Chapters.

GREEN\*

While in the first Channel, click the Green button to skip to the next Section in the Green Channel.

BROWN\*\*

While in the second Channel, click the Brown button to skip to the next Section in the Brown Channel.

Click or to jump backward or forward one book. A 2-second press will skip 3 books at a time.

3

Click or to jump backward or forward one chapter. A 2-second press will skip 5 chapters at a time.

Click or to jump backward or forward *approximately* 10 seconds<sup>‡</sup>. A continuous press will keep navigating backward or forward until the button is released or the end/beginning of the file is reached.

*#The actual time skipped may vary slightly*

## EARPHONES, SPEAKERS AND VOLUME

Insert earphone\* or speaker plug into the standard 3.5mm audio jack on

4

the bottom of the player. The internal speaker will turn off. When the plug is removed, the internal speaker will turn back on.

Click or to decrease or increase volume. The volume will remain set at this level even after the player is turned off and restarted.

*\*Some earphones with built-in controls may not work properly.*

## PAUSING/ BOOKMARKING

Click to pause playback. To resume, click or one of the other navigation buttons ( ).

Any time the player is paused, it will

5

beep once and place the bookmark at the current position. When the player is turned back on later, playback will begin from the bookmark.

*\*The player supports a single playback bookmark.*

## RESET THE BOOKMARK

To reset the bookmark to the beginning of the message, follow these steps:

1. While the player is on, click .
2. After pausing the player, press for 2 seconds (it will beep once).
3. The bookmark is now reset to the beginning. You may resume playback or turn the player off.

6

## CHARGING INSTRUCTIONS

With proper care, the player's Lithium-Ion battery should perform well for several years. When shipped, the battery is only partially charged. Please fully charge the player before the first use following one of the charging methods below:

For fastest charge, connect any standard "USB" charger (regulated +5VDC, minimum 300mA) to the micro-USB port on the player for about 2 hours\* or until the LED stops blinking.

Plug player into any standard computer USB port using a "USB to micro-USB" cable for about 3 hours\* or until the LED stops blinking.

7

For solar charging, place the player with the solar panel facing bright sunlight for at least 8 hours\*. When solar charging, there is no charge indication.

*\*Actual charge time will vary according to the current battery capacity and method of charging.*


## BATTERY CARE

- Avoid completely depleting the battery as this will shorten its overall lifetime and takes much longer to fully charge afterwards.
- If sunlight is the only means available for charging, it is recommended to leave the player in direct light *often* to keep the battery at least partially charged.

8

- When not in use and whenever possible, keep the player in a cool place, which will also help to preserve battery life.
- Before stowing the player for prolonged periods, make sure the battery is at least partially charged.
- If stored for *extended* periods, it is recommended to recharge the player at least every 6 months, in order to prevent the battery from losing its ability to recharge.
- Should the battery become defective and unable to accept a charge, it is still possible to operate the player using a USB cable connected to a computer or an electric charger. If sunlight is the only source for power/charging, please replace the battery.

## CHARGING/ COMMUNICATION MODES


1. The player is on and in Playback mode.
2. Connect to a computer: the player will enter Computer Communication mode and turn itself off.
3. The player will connect with the computer.
4. Depending on the computer and the battery level, the LED will blink (Charging/communication indication).
5. After a few seconds, clicking  will disconnect the player from Computer Communication mode, and return to Playback mode.

6. At this point, physically disconnecting the player from the computer will stop the battery charging.
7. To connect to the computer again, the player will need to be unplugged and then reconnected.
8. While connected to the computer, the player's battery will be charging.

*\*Changing to Computer Communication mode is essential to allow programming of the player or Firmware.*

## PROBLEMS WITH THE PLAYER?

If the unit will not turn on, please try the following:

1. Make sure the battery is charged according to the "Charging Instructions".
2. If the battery is OK, force a reboot of the player by holding  for about 10 seconds. The player should restart automatically.
3. If #2 fails, reset the player by gently inserting the end of a paper clip for a few seconds into the reset hole on the back of the player, just above the left-most screw holding the back panel. This is the same as disconnecting/

reconnecting the battery. Then try to turn the player on.

4. If none of the above succeeded, please contact your sales representative for support.

## WARNINGS

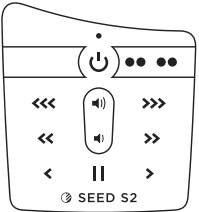
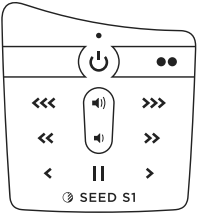


- Care must be taken to set the volume at the lowest level that can be heard comfortably. Prolonged exposure to loud sound can cause gradual hearing loss.
- DO NOT expose player or battery to fire or extreme heat.
- Stop using player if you observe abnormal heat, odor, discoloration, leakage or deformation, especially near

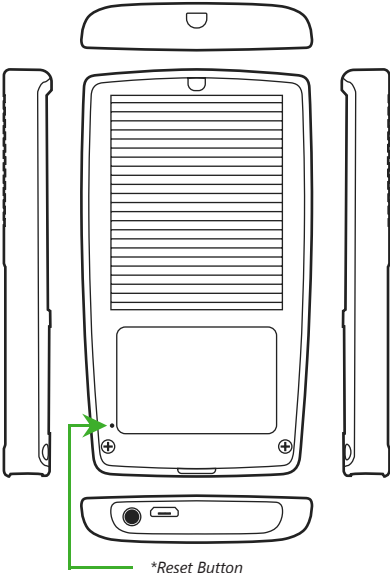
battery. Refer to a qualified technician for service.

- If the battery is removed from the player, handle it with care. Keep the exposed battery out of reach of children. DO NOT burn, puncture, disassemble, or modify battery.
- If battery leaks, dispose of it carefully in accordance with all local laws. Wash any skin or clothing exposed to battery liquid and avoid swallowing or contact with eyes. In the case of swallowing or contact with eyes, seek medical care immediately.

## SEED S MODEL KEYPADS



## OTHER SIDES



This device complies with part 15 of the FCC Rules. Operation is subject to the following two conditions:

(1) This device may not cause harmful interference, and (2) this device must accept any interference received, including interference that may cause undesired operation.

Changes or modifications not expressly approved by Solar Grove Solutions could void your authority to operate this device.