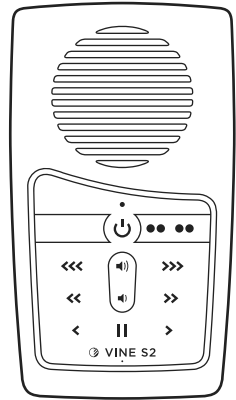


VINE S MODELS



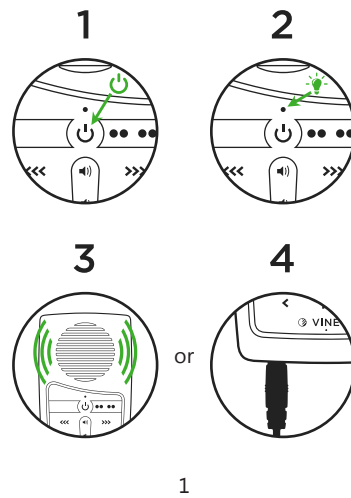
SOLAR AUDIO PLAYER USER MANUAL



Models: S1 and S2 (pictured)

EASY START

Press and hold until the LED turns on. The player will beep once and start to play automatically.



TURNING THE PLAYER ON/OFF

Press on the front of the player for 2 seconds to turn the player on and begin playback (it will beep once). Press again for 2 seconds to turn the player off (it will beep twice).

¹While the player is on, a click on will perform a battery test. The LED will blink rapidly for 2 seconds indicating the remaining capacity (**Green**: 30-100%, **Yellow**: 10-29%, **Red**: 0-9%).

²When battery capacity drops to 0-9%, the LED will continuously blink **red**. Once the capacity drops to the minimum required for operation, Vine will turn itself off.

2

SELECTING A CHANNEL

BROWN¹ GREEN

While playing audio from one Channel, clicking on the second Channel¹ button will navigate to the beginning of the second Channel.

¹Applies to the Vine S2 only.

NAVIGATING DURING PLAYBACK

Each Channel is subdivided into one or more Sections, containing one or more Books, containing one or more Chapters.

GREEN

While in the **Green** Channel, click to

3

skip to the next Section in the **Green** Channel. When in the **Brown** Channel¹, a click on will navigate to the beginning of the **Green** Channel.

BROWN¹

While in the **Brown** Channel, click to skip to the next Section in the **Brown** Channel. When in the **Green** Channel, a click on will navigate to the beginning of the **Brown** Channel.

Click or to jump backward or forward one book. A 2-second press will skip 5 books at a time. Press and hold² will continue until the first/last Book in the current Section is reached or the button is released.

Click or to jump backward or forward one chapter. A 2-second press will skip 5 chapters at a time. Press and

4

hold² will continue until the first/last Chapter in the current Book is reached or the button is released.

Click or to jump backward or forward *approximately* 20 seconds³. A continuous press² will perform a fast rewind/fast forward until the button is released or the beginning/end of the file is reached.

¹Applies to the Vine S2 only.

²During press and hold, the LED will blink accordingly.

³The actual time skipped may vary slightly.

5

EARPHONES, SPEAKERS AND VOLUME

Insert an earphone or speaker plug into the standard 3.5mm *stereo* audio jack on the bottom of the player. The internal speaker will turn off and audio will be output to the earphone.

Click (volume down) or (volume up) to lower or raise volume. The player will always remember the last volume setting.

¹Whenever an audio device is disconnected, the player will enter Pause Mode.

²Some earphones with built-in controls may not work properly.

6

PAUSING/ BOOKMARKING

Vine S Models support a total of 7 playback bookmarks.

While in playback mode, click to enter Pause Mode (playback will suspend and the LED will blink intermittently).

A click on any of the buttons will resume playback from the bookmark previously associated with that button. If no bookmark is set, the player will beep 3 times.

A 2-second press on any of the buttons will set (or reset) a bookmark to the current audio position (player beeps once to confirm).

The default bookmark, which is used to resume playback when the player is

7

turned on, may be set with a 2-second press on . This will work whether in Playback or Pause Mode and the player will beep 3 times to confirm.

To resume playback from Pause Mode, click .

¹If the player is paused for more than 15 minutes, it will beep twice and turn itself off.

RESETTING THE DEFAULT BOOKMARK

To reset the default bookmark to the beginning of the messages, do the following:

1. While the player is on, click the button.

8

2. Once in Pause Mode, press the (volume up) button for 2 seconds (player will beep once).

3. The default bookmark is now reset to the beginning. You may resume playback or turn the player off.

CHARGING INSTRUCTIONS

With proper care, the player's Lithium-Ion battery should perform well for several years. When shipped, the battery is only partially charged. Please fully charge the player before the first use following one of the charging methods below:

For fastest charge, connect any standard "USB" charger (regulated

9

+5VDC, minimum 300mA) to the micro-USB port on the player for about 2 hours¹ or until the LED stops blinking.²

Plug player into any standard computer USB port using a "USB to micro-USB" cable for about 3 hours¹ or until the LED stops blinking.²

For solar charging, place the player with the solar panel facing bright sunlight for at least a full day¹. When solar charging, there is no charge indication.

¹Actual charge time will vary according to the power source and current battery capacity.

²While charging, the LED will blink according to the charge level (**Green**: 30-100%, **Yellow**: 10-29%, **Red**: 0-9%).

10

BATTERY CARE

- Avoid completely depleting the battery as this will shorten its overall lifetime and takes much longer to fully charge afterwards.
- If sunlight is the only means available for charging, it is recommended to leave the player in direct light *often* to keep the battery at least partially charged.
- When not in use and whenever possible, keep the player in a cool place, which will also help to preserve battery life.
- Before stowing the player for prolonged periods, make sure the battery is at least partially charged.
- If stored for *extended* periods, it is

11

recommended to recharge the player at least every 6 months, to prevent the battery from losing its ability to recharge.

- Should the battery become defective and unable to accept a charge, it is still possible to operate the player using a USB cable connected to a computer or an electric charger. If sunlight is the only source for power/charging, please replace the battery.

CHARGING/ COMMUNICATION MODES

When connecting the Vine to a computer, it can be done in one of two modes: charging or communication.

12

¹*Changing to computer communication mode is essential to allow programming of the player.*

Connecting a player to a computer for programming purposes:


Connect the player to a computer using a micro-USB SLS cable (for onboard programming). The player will automatically enter *computer communication mode*².

²*While in computer communications mode, the player will also be charging.*

Connecting a player to a computer for charging purposes:

Connect the player to a computer using a micro-USB SLS cable, a Standard micro-USB Data cable or a Charge Only micro-USB cable.

13

- If connected via SLS/Data cable, and you want to disconnect from computer communication mode and continue charging your player, click  on the front of the player. If the player was on prior to connecting it to the computer, the player will return to playback mode.


- For the computer to recognize the player again, the player will need to be unplugged from the computer, and reconnected.

- Depending on the connection type, and the player's battery level, the LED will blink (indicating communication activity or charging level).

- Physically unplugging the player from the computer will stop the charging process.

14

RESETTING PLAYER DEFAULTS

Resetting player defaults (listed below) is done by pausing the player and pressing  (volume down) for 2 seconds. The player will beep 3 times and remain in Pause Mode.

- Default playback bookmark (to beginning of Channel 1)
- Volume level (to normal)


PROBLEMS WITH THE PLAYER?

If the player will not turn on, please try the following:

1. Make sure the battery is charged

15

according to CHARGING INSTRUCTIONS.

2. If the battery is OK, force a reboot of the player by holding  for about 10 seconds. The player should restart automatically.

3. If #2 fails, reset the player by gently inserting the end of a paper clip for a few seconds into the reset hole on the back of the player, just above the left-most screw holding the back panel. This is the same as disconnecting/reconnecting the battery. The player should restart automatically.

4. If none of the above succeeded, please contact your sales representative for support.

16

WARNINGS



- Care must be taken to set the volume at the lowest level that can be heard comfortably. Prolonged exposure to loud sound can cause gradual hearing loss.
- DO NOT expose player or battery to fire or extreme heat.
- Stop using player if you observe abnormal heat, odor, discoloration, leakage or deformation, especially near battery. Refer to a qualified technician for service.
- If the battery is removed from the player, handle it with care. Keep the exposed battery out of reach of

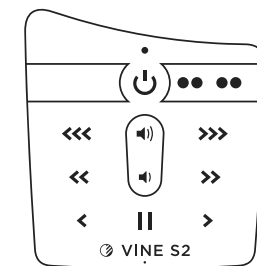
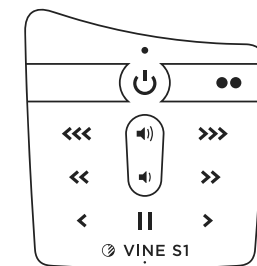
17

children. DO NOT burn, puncture, disassemble, or modify battery.

- If battery leaks, dispose of it carefully in accordance with all local laws. Wash any skin or clothing exposed to battery liquid and avoid swallowing or contact with eyes. In the case of swallowing or contact with eyes, seek medical care immediately.

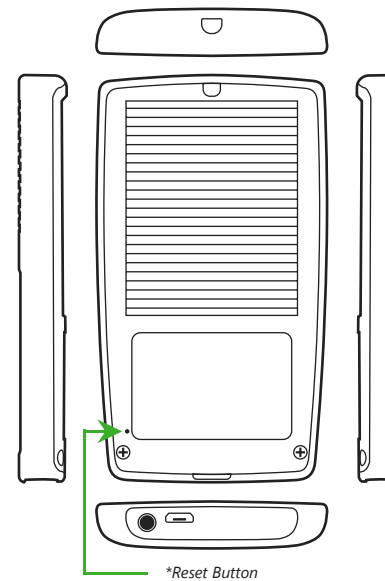
18

VINE S MODEL KEYPADS



19

OTHER SIDES



*Reset Button

20



© 2022 Solar Grove Solutions Made in China

SGS-Vine S Models-UM-One Dot-Accordion-Eng-2022.03.03-1.0.0

21